

# **Critic-Aid<sup>®</sup> Clear**

Clear Moisture Barrier Ointment

# **Critic-Aid<sup>®</sup> Clear AF**

Clear Moisture Barrier With Antifungal

## Healthcare Clinician's comments after using the Critic-Aid<sup>®</sup> Clear products:

### Clinical Performance

- "Very effective"
- "Stands up well to lots of liquid diarrhea"
- "The product does not leave stains or come off on the sheets."
- "Buttocks, between the legs and the perineum were raw-red."
- "**Critic-Aid<sup>®</sup> Clear** Moisture Barrier really helped and stood up well."
- "Stayed in place better - did not rub off on chux (blue pads), etc."
- "Very easy to remove"
- "Stays on the patient"
- "Stood up well with lots of stool"
- "Wipes off easily and doesn't injure tender skin."

### Ease of Use

- "We want something quick-simple-easy as 1-2-3. Both of the clear barriers offer this."
- "Strongly agree that the products were easy to remove and adhered well"
- "Easy to assess, saves time, NO guesswork!!!"
- "Clear barrier, easier to remove than the occluded barrier"

### Nurse Preference

- "I love it!"
- "I liked the way I can see the skin after application."
- "I like the clear products."
- "I love the clear cream: it works!!"
- "We want a "Quick Fix"."
- "I can't afford an extra ten minutes to remove product just so I can assess the skin. Clear barriers save me time."

### Purchase Decisions


- "What is this cream? Can we purchase it?"
- "We would prefer to use these products at our hospital."

These four case studies and healthcare clinician's comments are part of a group of comparative multisite case studies. An abstract with the results of the comparative multisite case studies has been submitted for poster/oral presentation in 2006.

Sponsored by:



Coloplast Corp.  
Minneapolis, MN 55411  
800.533.0464  
www.us.coloplast.com  
www.sweenstore.com  
usmedweb@coloplast.com

 **Coloplast<sup>®</sup> Critic-Aid<sup>®</sup>, Bedside-Care<sup>®</sup>, and Peri-Wash<sup>®</sup>** are registered trademarks of Coloplast A/S or related companies.  
©2007.05 Coloplast Corp. All rights reserved.

# **Critic-Aid<sup>®</sup> Clear**

Clear Moisture Barrier Ointment

and

# **Critic-Aid<sup>®</sup> Clear AF**

Clear Moisture Barrier With Antifungal

## Patient Outcomes: Case Studies

### Evaluating Two Clear Moisture Barriers That Adhere To Denuded Skin Exposed To Incontinence



# Critic-Aid® Clear

## Clear Moisture Barrier Ointment

Windy Hill Long Term Acute Care, Marietta, GA, part of Well Star Health System Atlanta, GA. Denise Lindhardt, BSN, WOCN

A 51-year-old African American male was admitted to long-term care with multiple diagnoses; hypertension, atrial fibrillation, and respiratory failure that required a tracheotomy and ventilator. He has clostridium difficile. NutraRenal<sup>1</sup> is administered through a feeding tube for nutrition. He is on bed rest, and dependent on nursing staff for turning. The Wound Ostomy Continence Nurse is consulted for skin injury related to incontinence.

### Assessment

He is incontinent of urine and has constant liquid feces. After each incontinent episode the skin is cleansed with Carrington™ Caraklenz™ Skin and Wound Cleanser<sup>2</sup> followed by an application of Soothe & Cool® Inzo®.<sup>1</sup> These skin care products were replaced by **Bedside-Care®** Unscented Foam Cleanser and **Critic-Aid® Clear** Barrier. The incontinent brief was continued for containment.



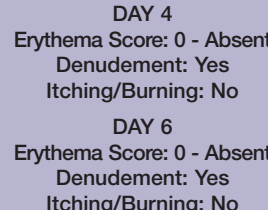
DAY 1  
Before application of  
**Critic-Aid® Clear**  
Erythema Score: 1 - Mild  
Denudement: Yes  
Itching/Burning: No



DAY 1  
After application of  
**Critic-Aid® Clear**



DAY 3  
Erythema Score: 0 - Absent  
Denudement: Yes  
Itching/Burning: No



DAY 4  
Erythema Score: 0 - Absent  
Denudement: Yes  
Itching/Burning: No



DAY 6  
Erythema Score: 0 - Absent  
Denudement: Yes  
Itching/Burning: No



DAY 10  
Returned to long-term  
acute care  
Erythema Score: 0 - Absent  
Denudement:  
Yes - Improving  
Itching/Burning: No

Deerbrook Health Care Center, Joliet, IL. Dasie Wilson, RNC, BS, MPA, CLCW, CWCN, ET

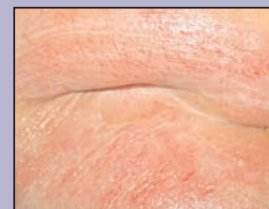
An 86-year-old Caucasian female was admitted to long-term care from acute care with multiple diagnoses; colitis, hypertension, diabetes mellitus, chronic obstructive pulmonary disease and Stage III pressure sores on the right trochanter and coccyx. She is receiving Diabetisource® AC<sup>3</sup> and has limited mobility using a wheelchair. The Wound Ostomy Continence Nurse is consulted for skin injury due to incontinence.

### Assessment

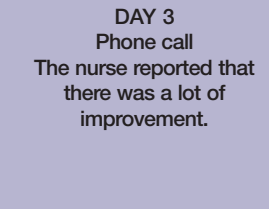
She has a foley catheter in place and has diarrhea that is contained with a disposable incontinent brief. The skin is cleansed with PeriFresh<sup>4</sup>, followed by an application of Proshield™ Plus.<sup>5</sup> These products were replaced with **Bedside-Care®** Unscented Foam Cleanser and **Critic-Aid® Clear** Barrier. The incontinent brief was continued for containment.



DAY 1  
Before application of  
**Critic-Aid® Clear**  
Erythema Score: 3 - Severe  
Denudement: Yes  
Itching/Burning: No



DAY 1  
After application of  
**Critic-Aid® Clear**



DAY 3  
Phone call  
The nurse reported that  
there was a lot of  
improvement.



DAY 6  
Erythema Score: 1 - Mild  
Denudement: No  
Itching/Burning: No

# Critic-Aid® Clear AF

## Clear Moisture Barrier With Antifungal

Countryside Health Care, Aurora, IL. Dasie Wilson, RNC, BS, MPA, CLCW, CWCN, ET

A 67-year-old female Caucasian was admitted to long-term care. Her diagnoses included diabetes mellitus type 2, deep vein thrombosis, chronic anemia, dementia, dysphasia, and history of colitis. She has methicillin-resistant *Staphylococcus Aureus* (MRSA) that is treated with an antibacterial daptomycin (Cubicin)<sup>6</sup> IM daily. She received a puréed/diabetic diet and Resource<sup>®7</sup> per tube feeding. She has limited mobility, standing to transfer to a wheelchair. The wound ostomy continence nurse is consulted for the skin injury due to fecal incontinence resulting from treatment of the MRSA.

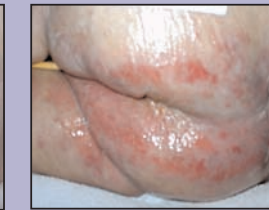
### Assessment

A foley catheter is in place; she has copious amounts of liquid feces contained with an adult cloth reusable brief. The skin is cleansed with soap and water and Proshield™ Plus<sup>8</sup> is applied. The clinical assessment indicated cutaneous candidiasis.

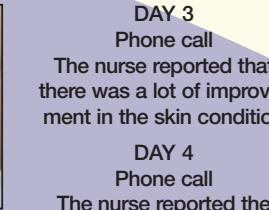
**Bedside-Care®** Unscented Foam Cleanser and **Critic-Aid® Clear AF** Barrier were selected to replace the current skin care products. The incontinent brief was continued for containment.



DAY 1  
Before application of  
**Critic-Aid® Clear AF**  
Erythema Score: 3 - Severe  
Denudement: Yes  
Satellite Lesions: Yes  
Itching/Burning: Yes



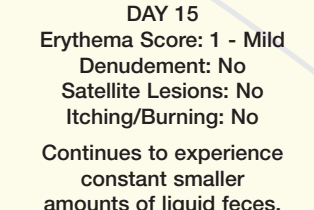
DAY 1  
After application of  
**Critic-Aid® Clear AF**



DAY 3  
Phone call  
The nurse reported that  
there was a lot of improve-  
ment in the skin condition



DAY 6  
Erythema Score: 1 - Mild  
Denudement:  
Yes, very small areas  
Satellite Lesions: No  
Itching/Burning: No



DAY 15  
Erythema Score: 1 - Mild  
Denudement: No  
Satellite Lesions: No  
Itching/Burning: No  
  
Continues to experience  
constant smaller  
amounts of liquid feces.

Gwinnett Health System, Lawrenceville, GA. Laura Shafer, BSN, RNC, WOCN and Kelly Scoggins, RN, BSN, CWOCN

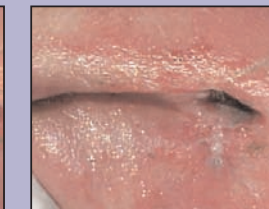
An 88-year-old Caucasian female admitted to acute care with multiple diagnoses including cerebral vascular accident and congestive heart failure. Her medications included a diuretic (Furosemide)<sup>9</sup>. She is on a puréed diet and bed bound. The Wound Ostomy Continence Nurse is consulted for skin injury due to incontinence.

### Assessment

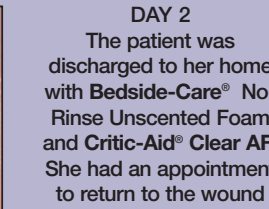
After every urinary incontinent episode **Peri-Wash® II** No-rinse Cleanser and Deodorizer is used without a barrier. A disposable incontinent brief is used for containment. Clinical assessment indicated cutaneous candidiasis. **Bedside-Care®** Unscented Foam Cleanser and **Critic-Aid® Clear AF** Barrier were selected to replace the current skin care products.



DAY 1  
Before application of  
**Critic-Aid® Clear AF**  
Erythema Score: 3 - Severe  
Denudement: Yes  
Satellite lesions: Yes  
Itching/Burning: No



DAY 1  
After application of  
**Critic-Aid® Clear AF**



DAY 2  
The patient was  
discharged to her home  
with **Bedside-Care®** No-  
Rinse Unscented Foam  
and **Critic-Aid® Clear AF**.  
She had an appointment  
to return to the wound  
care clinic for the final  
assessment.



DAY 3  
Phone Call  
The daughter stated  
that her mother's skin  
has improved.

<sup>1</sup>Norvartis Medical Nutrition, Bazel Switzerland  
<sup>2</sup>Medline Industries Inc., Mundelein, IL  
<sup>3</sup>Norvartis Medical Nutrition, Bazel Switzerland

<sup>4</sup>DermaRite Industries, Paterson, NJ  
<sup>5</sup>Healthpoint, LTD Health Products, Fort Worth Texas

<sup>6</sup>Cubist pharmaceuticals, Lexington, MA  
<sup>7</sup>Norvartis Medical Nutrition, Bazel, Switzerland

<sup>8</sup>Healthpoint, LTD Health Products, Fort Worth, Texas  
<sup>9</sup>DermaRite Industries, Paterson, NJ